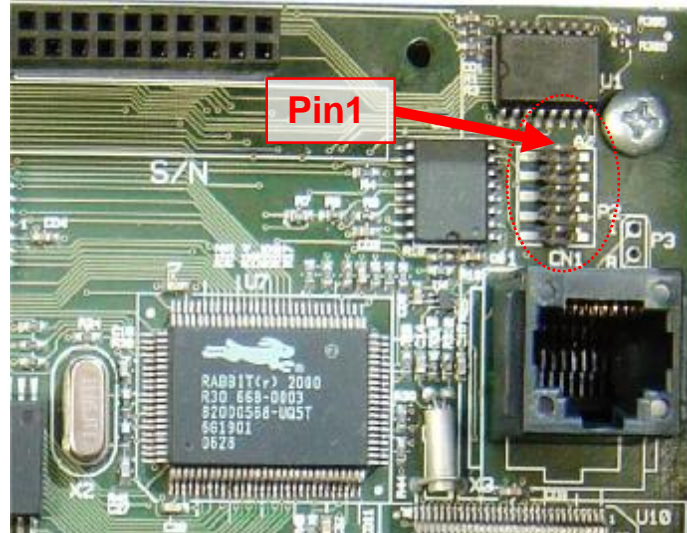


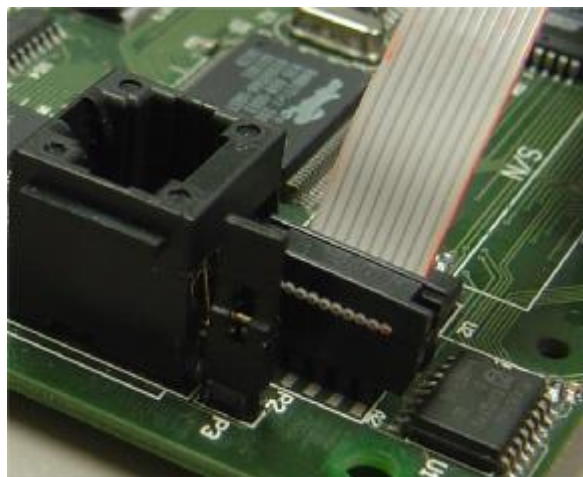
IPDACT firmware upgrade using RFU Programming Cable

Steps

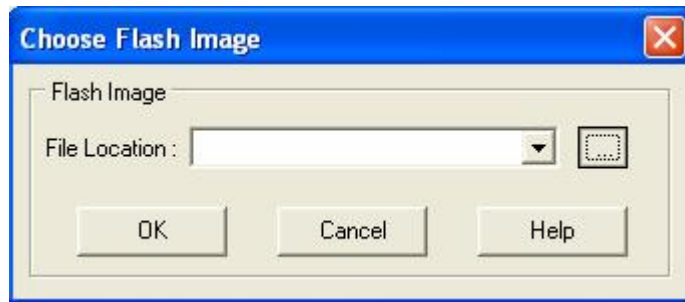
1. If you are upgrading an IPDACT-UD model please put a jumper into the P3 connector as if you were going to clone the device.



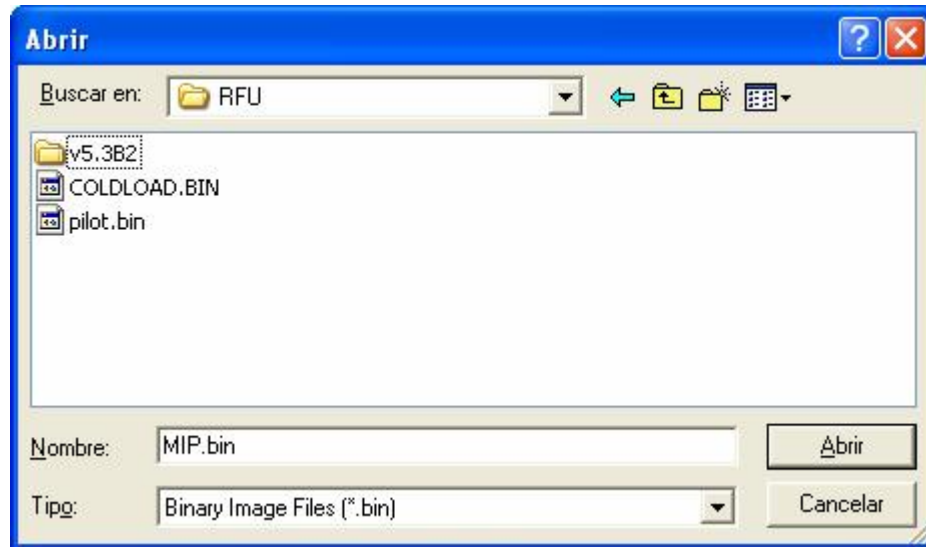
2. Connect one side of the Programming cable to a Serial Port of the PC and the other to the P2 connector of the IPDACT. Please note the position of the red band of the cable.



3. Run the IPDACT_upgrade.exe file and unzip into C:\Teldat\RFU
4. Select the "File" option and then the "Load Flash Image" option.

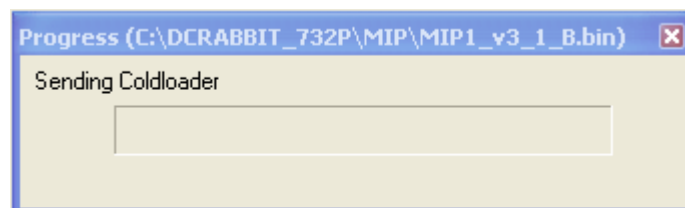


5. In the "File Location" press the dotted button to browse the hard disk.



Browse to the desired firmware release and then select the mip.bin file.

6. When you press the OK button of the Choose Flash Image window the load of the firmware will start.



7. If there is any problem with the Programming Cable or if it is not connected properly the next message will appear:



8. If during the load the application does not find the flash.ini file then you must manually copy the flash.ini file of the .\Teldat\RFU directory to the temporary directory of your PC.
The temporary directory is specified by the environment variable TMP.
9. After the load remove the jumper of P3 and reboot the device. Please check that the load has been successful by means of the General Info option of the Monitoring menu.

Monitoring

- d) General Info
- e) Remote Monitor
- f) Events
- g) IP Connectivity

- z) Exit

option: d

General Info

Teldat MIP v3 @ 11.0592 MHz (36)
S/N: 0563/33333 FF100408 0
v5.3B2 US Apr 15 2008